



San Mateo County Parks Department

**Off Leash Dog Recreation
Pilot in Quarry County Park
June 2023**

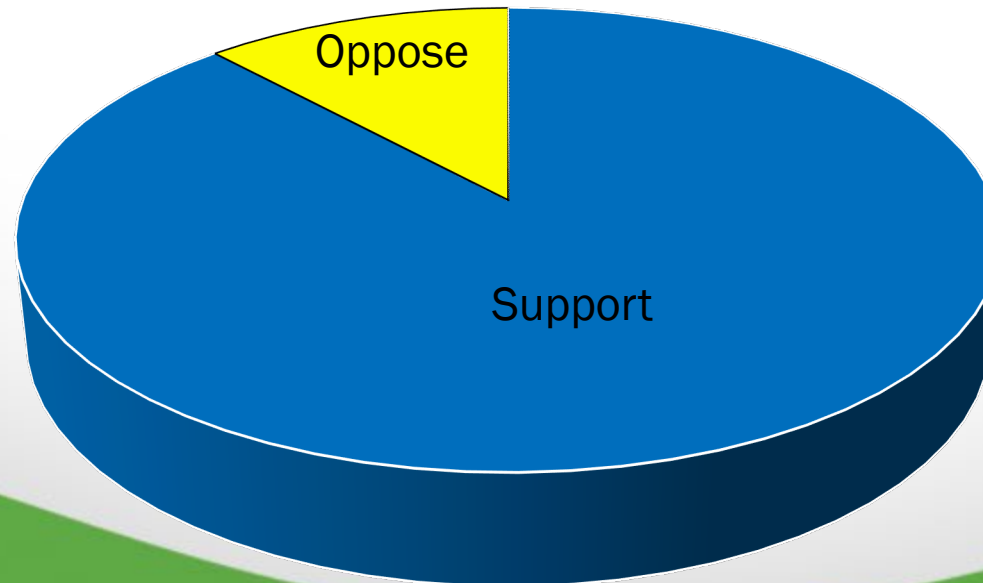
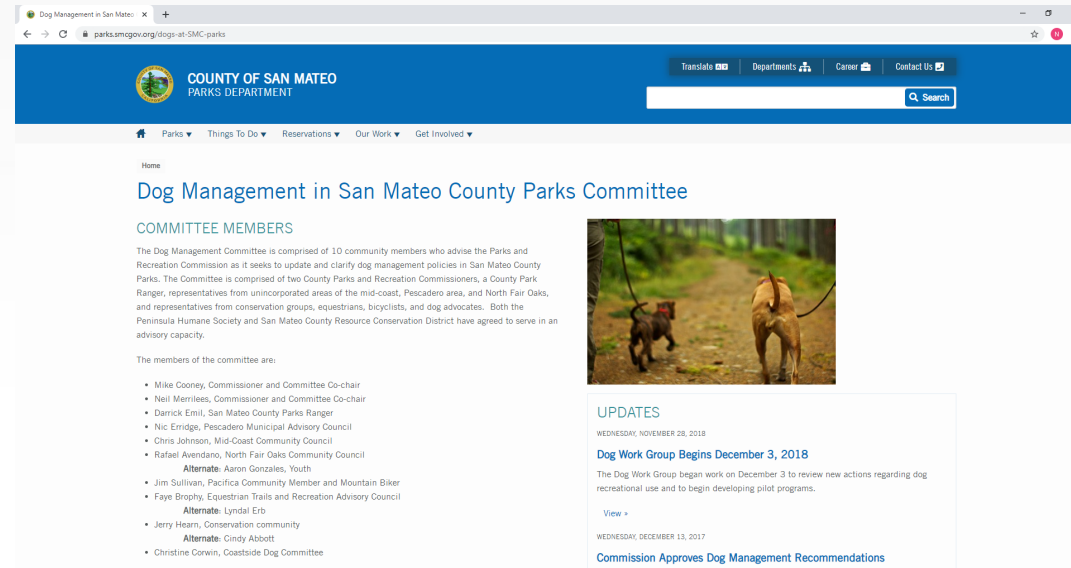
Agenda

- Overview of Off-Leash Dog Recreation Pilot Program at Quarry County Park
- Presentation of Findings from the Pilot Program



Background

- Monthly Dog Recreation Work Group meetings
- On-Leash Dog Pilot
- County Ordinance Changes
- Off-Leash Recommendations
- CEQA Review & Permit
- Pilot Commencement



Amendment to Ordinance for Off Leash Dogs

- To implement the off-leash dog recreation pilot program, Chapter 3.68 of the County's Ordinance Code must be amended as Section 3.68.080(i) currently prohibits park visitors from recreating in County Parks and Recreation Areas with dogs off-leash.

The amendment included:

- Off-leash dog(s) must be under voice and sight control;
- Dog(s) must remain on designated and signed trails, within view and earshot, and no more than 25 feet away from owner/handler;
- Dog(s) must be on-leash in developed areas (i.e., near traffic, parking lot, lawn or play field, deck, picnic areas, etc.);
- No more than two off-leash dogs allowed per owner/handler; and
- Owner/handler must have physical control of dog(s) when approaching or being approached by park users not also engaged in off-leash dog recreation.



Initial Study/Mitigated Negative Declaration & Adaptive Management Plan

- Most impacts were determined to be less than significant
- Nine (9) impacts will be less than significant after mitigation measures are implemented
- The Adaptive Management Plan ensures environmental impacts are minimized to the greatest extent possible
- Eight (8) indicators monitored to measure compliance and any environmental impacts that may occur
- Department to conduct monitoring, all data posted to the Department's website
- Coastal Development Permit also needed



Off-Leash Dog Recreation Pilot Program Timeline

July 2021 to April 2022

- Pre-pilot baseline monitoring and data collection

April 2022

- IS/MND and CDP approved for pilot at Quarry Park
- Pilot Program begins

April 2022 - May 2023

- Pilot Program monitoring for 12 months
- Results monitoring compiled and summarized

June-July 2023

- Public presentations – Parks Commission, Midcoast Community Council, Board of Supervisors

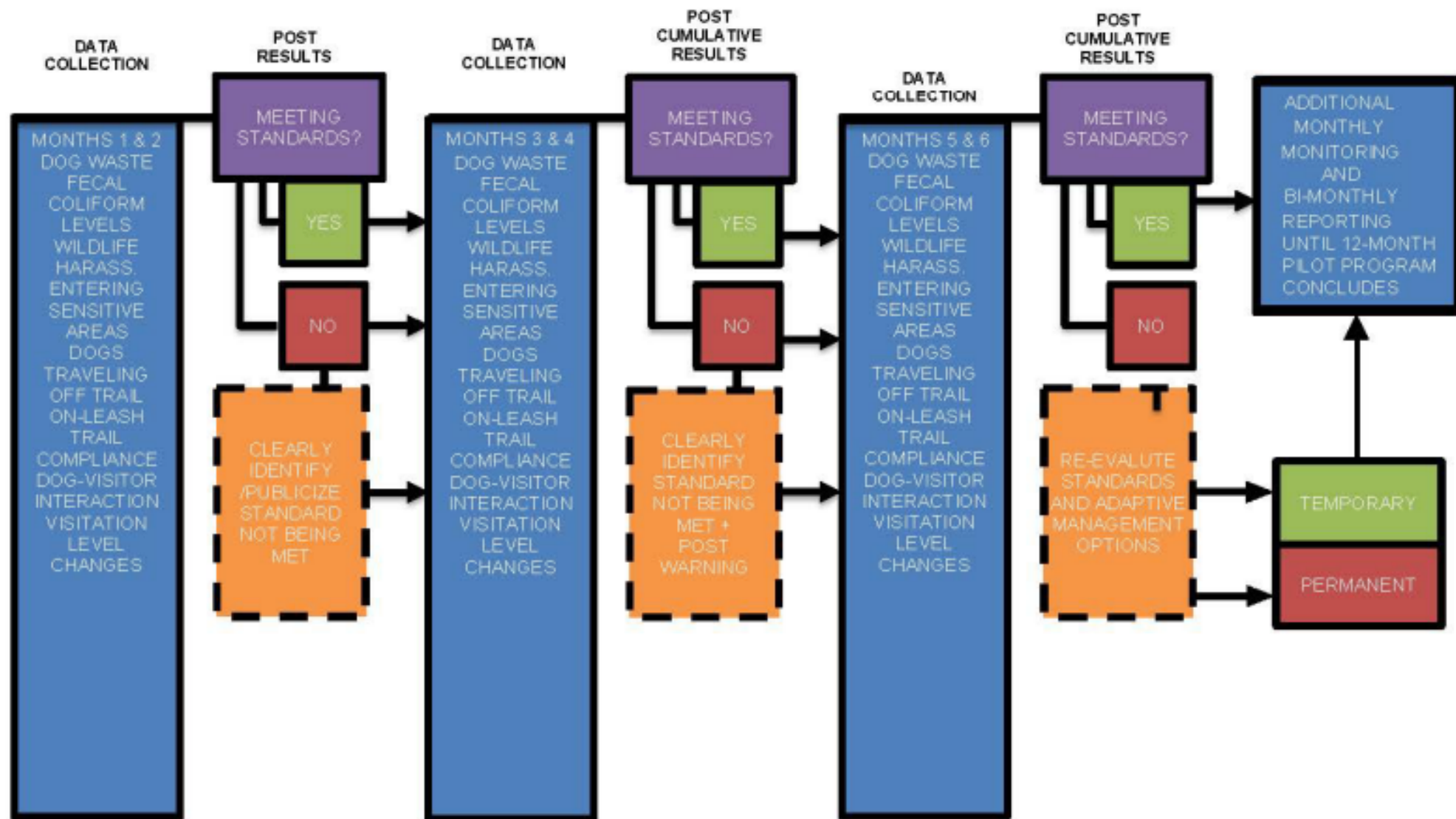


Quarry Park



Indicators for Monitoring

Indicator	Standard
Presence of dog waste	No more than 20 pieces of dog waste in one month
Fecal coliform levels	Presence of dog associated bacteria and E.coli shall not exceed 320 cfu/100 ml at any monitoring location
Harassment of wildlife	Dogs observed chasing or harassing wildlife no more than 2 times over a 60-day period
Dog entry into sensitive areas	No dogs observed entering a signed sensitive area
Dogs travelling off-trail	**No more than 1 instance of dog off trail by 10 or more feet per 60-day period
Leash compliance for on-leash trails	70% of parties have dog on leash on designated trails
Interactions between other visitors and dogs	Less than 10 times per month where dogs exhibit unwelcome behavior to other dogs or people
Changes in park visitation in response to visitors with off-leash dogs	No standard – general observations to be made over pilot



Baseline Data VS Pilot Monitoring Data

Quarry Park Baseline Monitoring Data	Total	Average
Dog Waste	293	36.6
Off-leash in On-leash Area	12	3
Dog in Prohibited Sensitive Area	1	0.25
Dog Off-Trail	3	0.75
Wildlife Harrasment	0	0
Public Conflict	4	1

Quarry Park Pilot Monitoring Data	Total	Average
Dog Waste	252	25.2
Off-leash in On-leash Area	6	1
Dog in Prohibited Sensitive Area	0	0.0
Dog Off-Trail	9	1.5
Wildlife Harrasment	0	0
Public Conflict	2	0.3



	May and June 2022	July and August 2022	September and October 2022	November and December 2022	January and February 2023	March and April 2023	Average
Presence of dog waste ¹	26 instances per month	8 instances per month	58 instances per month	N/A ¹	14 instances per month	18 instances per month	25.2 instances per month
Harassment of wildlife	0 instances	0 instances	0 instances	0 instances	0 instances	0 instances	0 instances per period
Dog entry to sensitive areas	0 instances	0 instances	0 instances	0 instances	0 instances	0 instances	0 instances per period
Dogs traveling off-trail	3 instances	2 instances	2 instances	1 instance	0 instances	1 instance	1.5 instances per period
Leash compliance for on-leash trails	75% leash compliance	72.2% leash compliance	100% leash compliance	50% leash compliance	100% leash compliance	100% leash compliance	82.9% leash compliance
Interactions with dogs and visitors	0 instances	1 instance	0 instances	1 instance	0 instances	0 instances	0.33 instances per period

Dog Waste

- Baseline Monitoring: Average of 36.6 observations of bagged or unbagged waste per month
- Pilot Monitoring: Average of 25.2 observations of bagged or unbagged waste per month
- Decrease in waste observations overall
- Adaptive management actions aided in improvement, will continue at the park ongoing (dog waste stations, education, signage)
- Volunteer cleanup efforts



Adaptive Management Actions

Quarry Park Off-Leash Dog Pilot is Underway!

San Mateo County Parks is conducting a one-year pilot program to explore allowing dogs and their owners to enjoy off-leash use of most trails in Quarry Park.

Not Disposing of Dog Waste Can Impact Off-Leash Pilot Success

For two consecutive monitoring periods the amount of dog waste left on trails has exceeded the pilot standard. For the pilot to succeed and for off-leash recreation to continue, dog waste must be picked up, bagged, and disposed of in a trash can.

Also remember:

- Keep dogs on trails and out of sensitive habitat.
- No more than three dogs per person (with a leash for each dog) and no more than two off leash.
- Keep dog(s) within 25' and under voice/sight control.

Let's all work together to keep off-leash dog recreation in the park!



Learn more about the Pilot Program

<https://www.smcgov.org/parks/leash-dog-pilot-program-quarry-park>

Leash Your Dog in Designated Areas



Look for signs:



Off-leash dogs OK



Dogs on leash OK

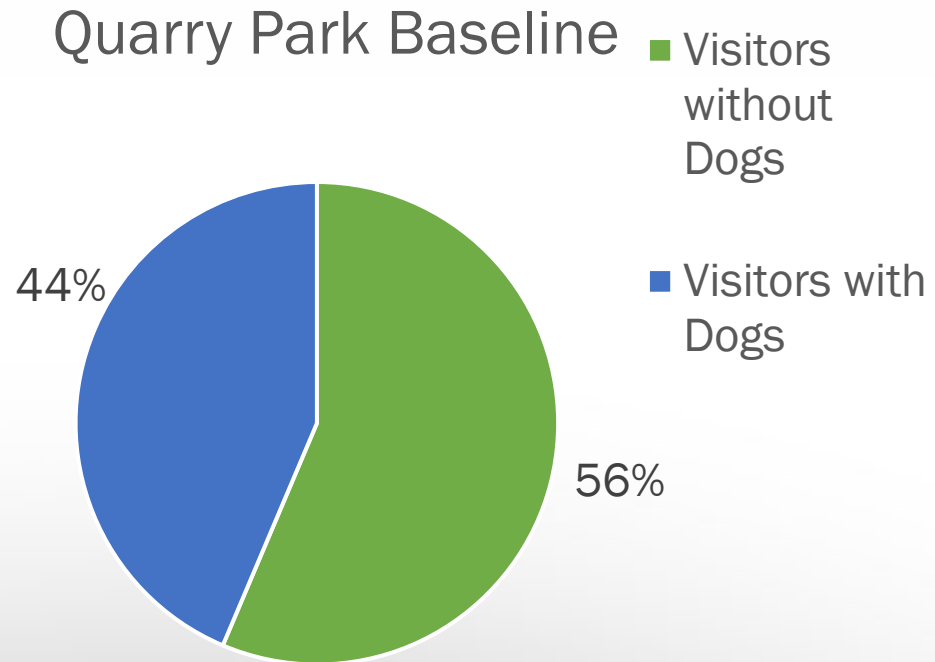


No dogs

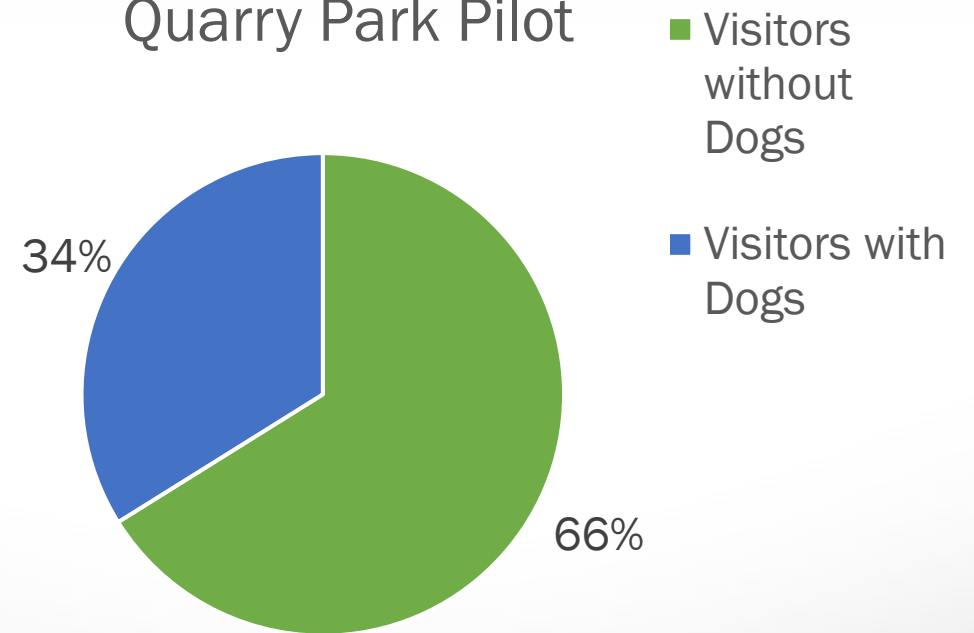


Visitation with Dogs: With or Without Dogs

Quarry Park Baseline

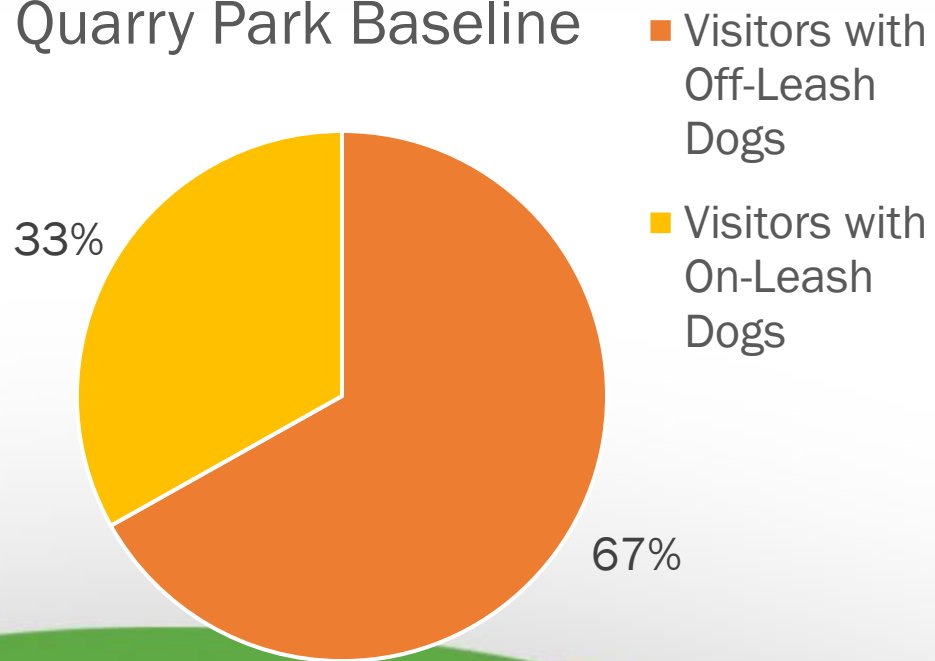


Quarry Park Pilot

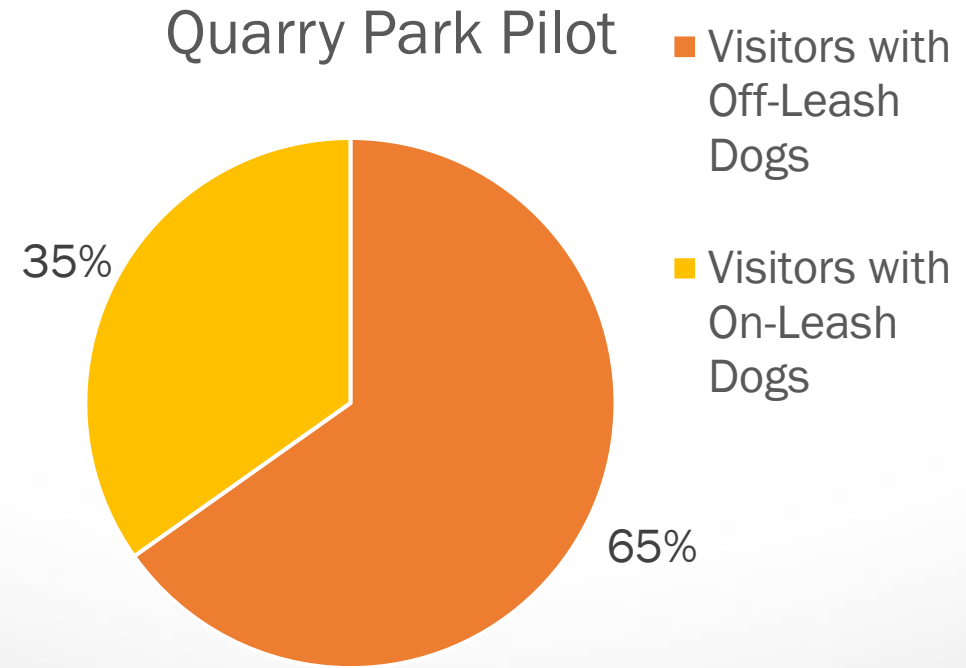


Visitation with Dogs: On-leash or Off-leash

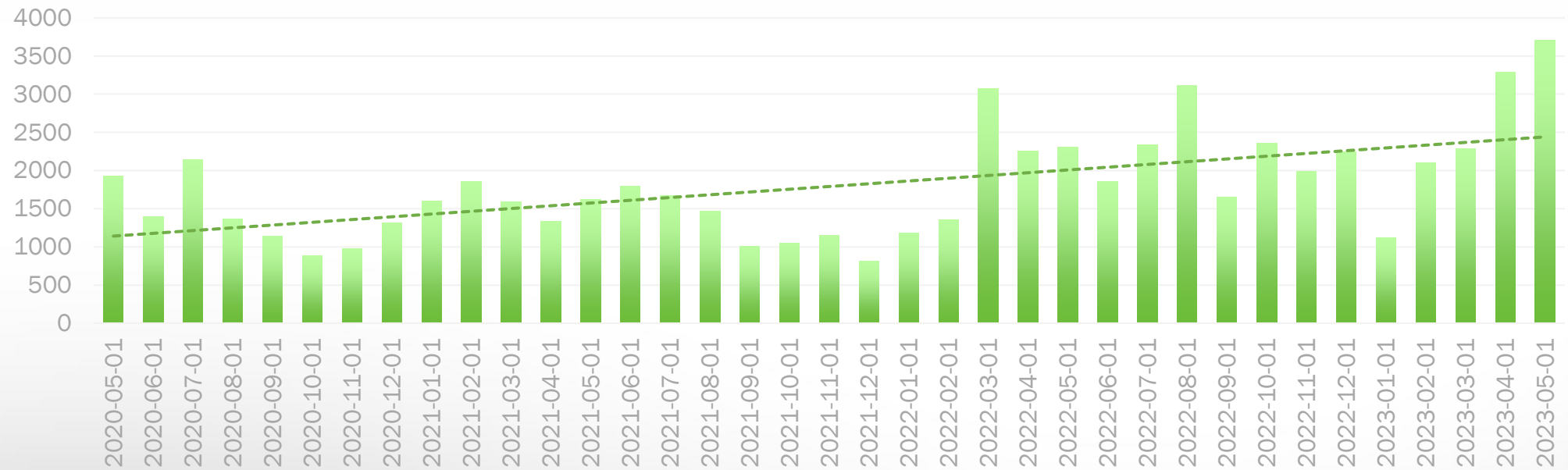
Quarry Park Baseline



Quarry Park Pilot



Visitation Trend



Fecal Coliform Levels

- Water quality sampling was difficult and inconclusive for the pilot program
- Water flow was inconsistent at sampling locations, and sampling that was able to occur not a reliable indicator of parks potential impact on downstream water quality



Next Steps

- Parks Commission July 6th 2023
- Board Presentation July 25th 2023
- Present on findings and discuss continuation of off leash dog recreation



QUESTIONS?

